



Interreg
Baltic Sea Region

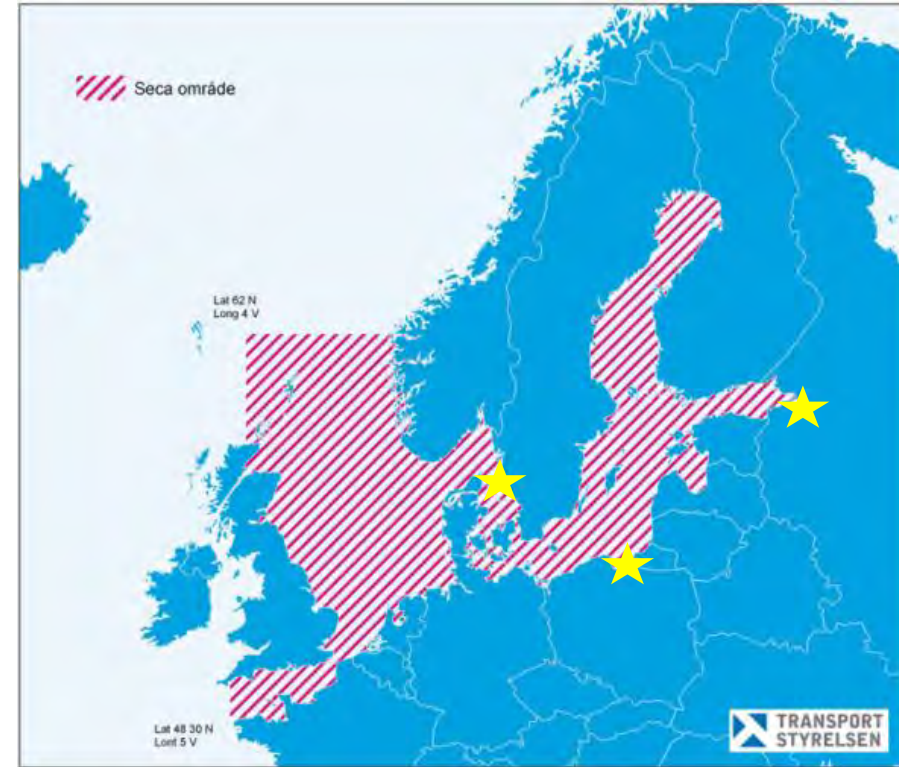
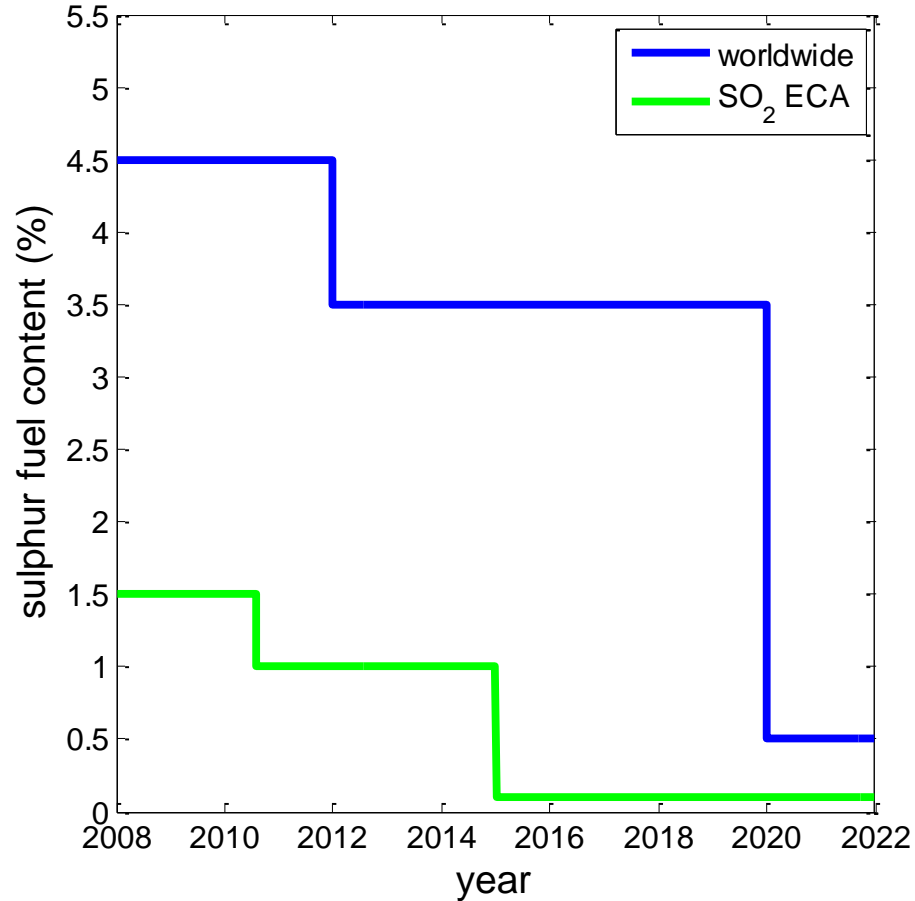


EnviSuM



**Technical efficiency and socio-economic impact
of the clean shipping in focus:
Recommendations benefiting the environment and health,
and supporting the maritime industry and economic growth**

Limit of sulfur fuel content for ships (IMO, MARPOL Annex VI) and EU directive 2012/33/EU



Sulfur Emission Control Area (SECA)

EnviSuM

