

# 17<sup>th</sup> INTERNATIONAL CONFERENCE & EXHIBITION ON LIQUEFIED NATURAL GAS (LNG 17)



## Technological Innovation and Infrastructure in the LNG Industry

By: Rob Bryngelson  
CEO Excelerate Energy  
April 19, 2013



International Organizers

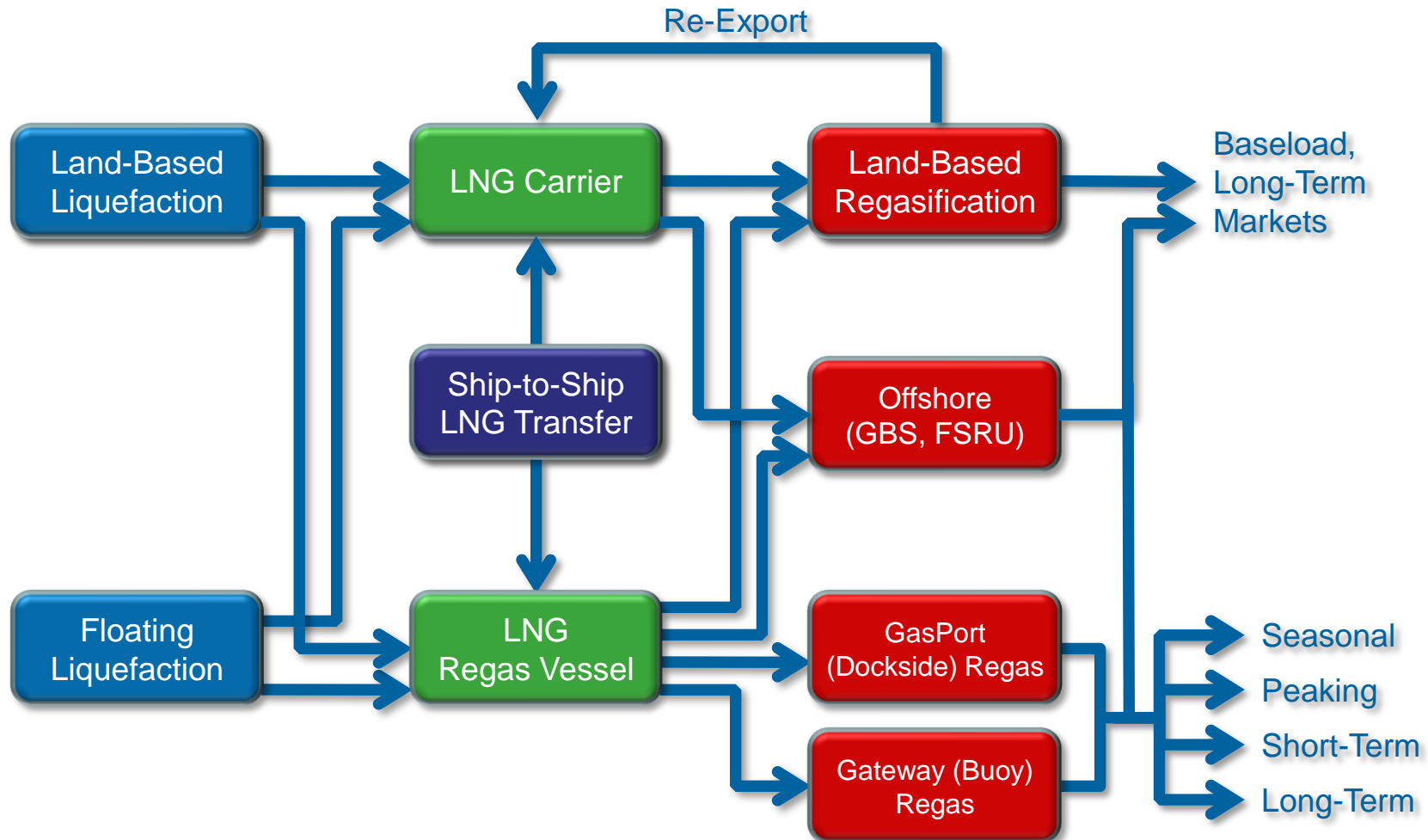


Host Association



# Industry Change

---



# Technological Advances

---

- Floating LNG is seeing advances in:
  - Regas vessel flexibility and performance
  - Regas terminal configurations
  - Cargo transfer solutions
  - Distributed / smaller load servicing
  - Offshore LNG production
- All of these help to more efficiently meet market demands and open new markets

# Vessel Flexibility and Performance

---

- Flexibility
  - Ability to operate as FSRU or LNGC
  - Combination with land-based infrastructure
  - Operability in a multitude of environments
- Performance
  - Regas range from <100 to >1,200 mmcfd
  - Storage capacity of 265,000 m<sup>3</sup>
  - Increased uptime and reliability

# Terminal Configurations

---

- Fast-track solutions in varying situations
- Key success factors
  - Reduced design time
  - Quick realization of long lead items
  - Rapid identification of key project risks

Single Vessel



Side-by-Side



Tandem/Across-Dock



Sea Island



Offshore Buoy



# Cargo Transfer Solutions

---

STS - Summary as of: 03/18/13



Operation	Count	Total (CuM)
Open Water	11	1,114,033.303
Gas In / Cool Down	3	25,571.850
In Port		
Double Banking	212	20,339,431.641
Tandem - Along Dock	114	15,269,762.853
Across Dock	29	2,245,888.355
Total	369	38,994,688.002

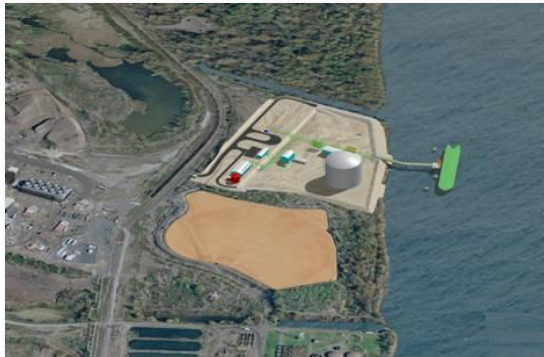
Operator	Count	Total (CuM)
EE Vessels	62	6,230,192.83
3rd Party Vessels	307	32,764,495.18
Total	369	38,994,688.002

Ship-to-ship LNG transfer has become an accepted solution

# Distributed / Small Loads

---

- Opening up smaller markets
  - STS from LNGC to small scale LNG carriers/barges
  - Small vessels deliver LNG to land-based satellite facilities in constrained areas
  - Land-based facilities provide storage and access to gas grid and/or power plants





# Offshore LNG Production

---





# Offshore LNG Production

## Completed FEED Results:

Cost: <\$600/tpa of production

Capacity: 4.4 MTPA

4 MTPA Liquefaction  
Vessel  
(250,000 m<sup>3</sup>  
Storage)

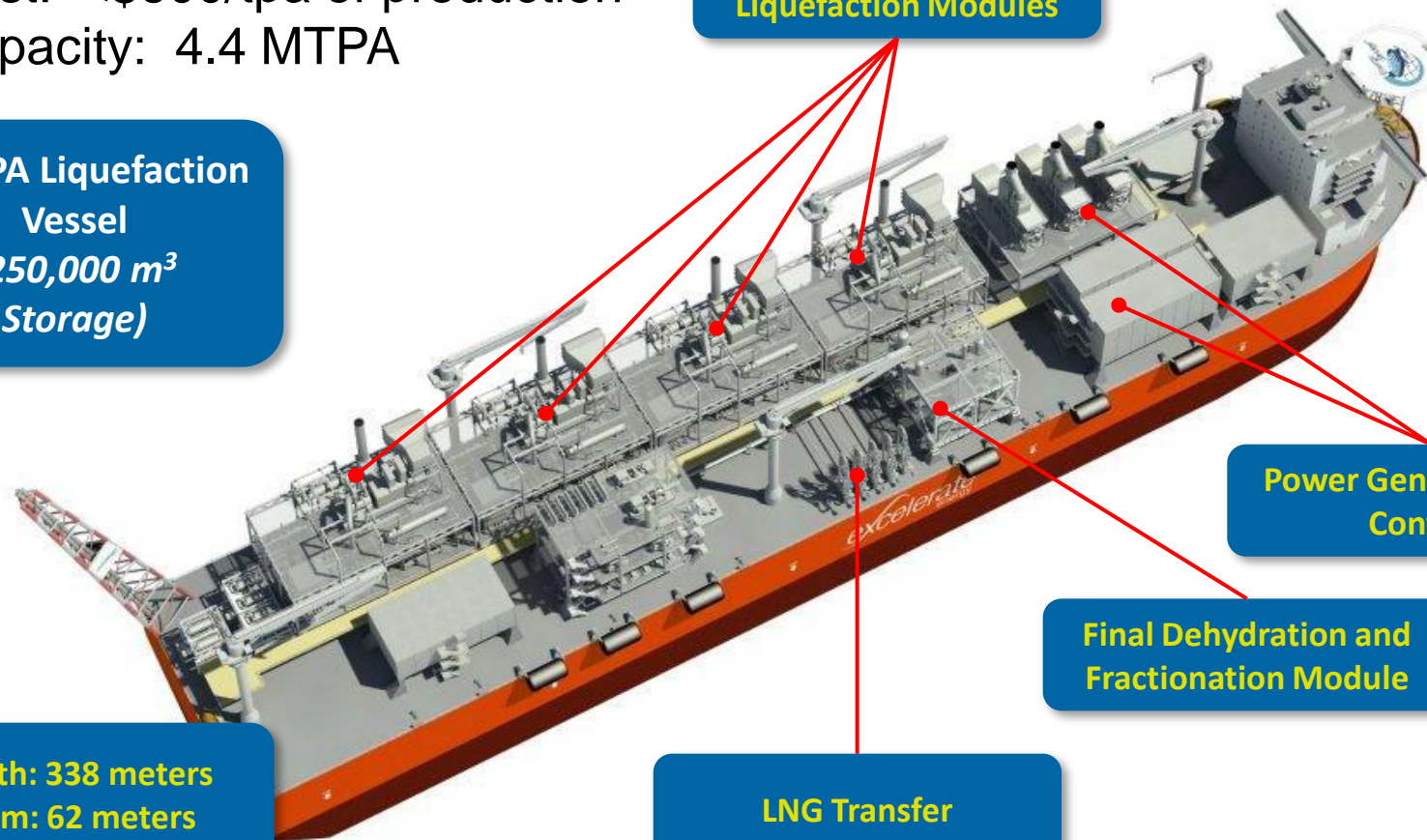
4 x 1 MTPA  
Liquefaction Modules

Power Generation and  
Controls

Final Dehydration and  
Fractionation Module

LNG Transfer

Length: 338 meters  
Beam: 62 meters



# What' s Next?

---

- Excelerate' s goal is to recognize a full floating value chain – from production to consumption



**Liquefaction**



**Transport**



**STS Transfer**



**Regasification**

- Many other opportunities for efficiency and optimization exist in the industry - the trick is to recognize them and act



*excels*  
*rate*  
energy